

630 000 €

Contact agency

WE INVEST

3 rue combarel

12000 Rodez

05 65 68 00 92 /

contact@occimmoconseil.com

For sale property

13 rooms

Surface : 407 m²

Surface of the land : 69068 m²

Year of construction : 1800

View : Panoramique

10 bedroom

1 bathroom

3 shower s

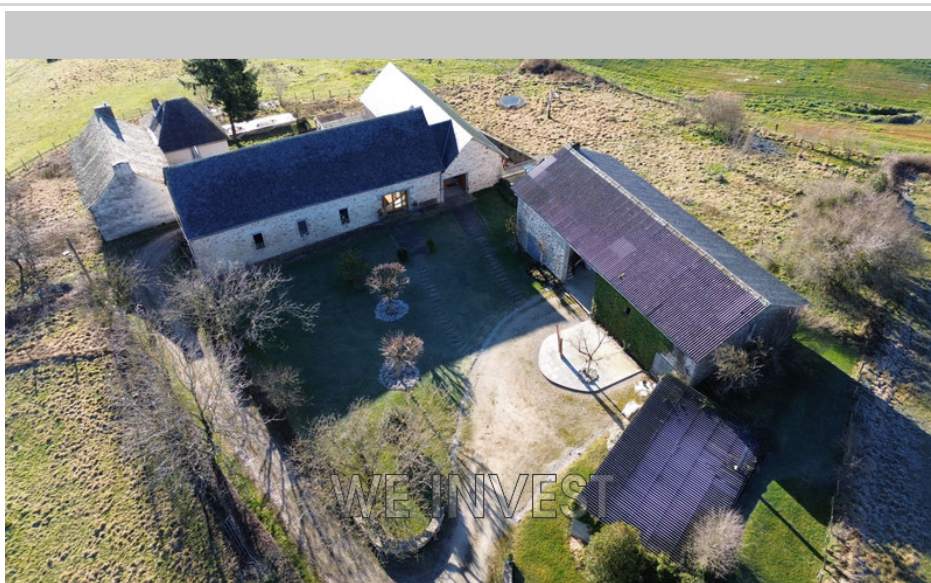
4 WC

2 garage

Energy class (dpe) : D

Emission of greenhouse gases (ges) : A

Document non contractuel



Property 158 Baraqueville

Property on more than 6 hectares 5 minutes from Baraqueville and 20 minutes from Rodez city center Imagine a property where old world charm meets modern comfort. The main house, converted in 2011 from two adjoining 19th century barns, offers quality services and a living area of approximately 275m². On the day side, you will be charmed by the large living room with a surface area of approximately 92m² with access to the terrace and bay window offering a clear view of the land of more than 6 hectares. On the night side, this property offers 4 bedrooms (one of which is converted into an office), a master suite with bathroom, a linen room/laundry room, a shared shower room and two separate toilets. On the mezzanine, at the level of the old stables and pigsty, more than 310m² of surface area used as a cannery, cellars and storage. The attic, insulated, has a floor for a total floor area of 330m². Three large terraces adorn the house so you can enjoy the sun all day long. The old house, with a living area of approximately 133m² with a mezzanine of approximately 103m² used as cellars, is to be renovated. It currently has a dining room, a kitchen, a living room and 6 bedrooms. Under the eaves, a convertible attic accessible from an insulated staircase on the ground. Two annex buildings are also included: - a first stone building divided into 3 volumes for a surface area of 200m² on the ground floor used as garages and workshop.

Upstairs 170m² of surface area including a space of 70m² on a slab with concrete



agreement on request).

Fees and charges :

630 000 € fees included

www.twimmo.com