

1 370 000 €

Contact agency

Styles

10 place vendôme

75001 Paris

+33 (0) 952 346 611 /

stylesimmobilier@gmail.com

For sale house

7 rooms

Surface : 420 m²

Surface of the land : 4660 m²

Exposition : Sud est

View : Parc

Hot water : Thermodynamique

Features :

POOL, AIR CONDITIONING, fireplace, double glazing, Automatic Watering, Laundry room, Automatic gate

5 bedroom

3 terraces

2 bathrooms

4 showers

7 WC

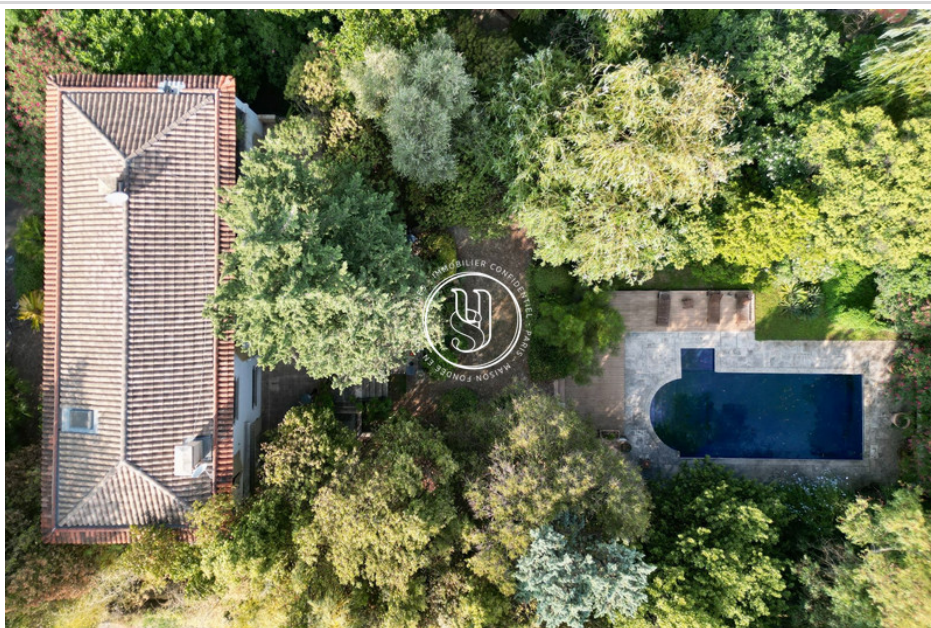
1 garage

7 parkings

Energy class (dpe) : D

Emission of greenhouse gases (ges) : E

Document non contractuel



House 3814 Montpellier

Close to the center of Montpellier, in the midst of a superb lush park of almost 5000m², lies a Bastide-style house. The two-storey house features a kitchen and double living room on the first floor, all opening onto a shaded terrace. Upstairs are four bedrooms, two shower rooms and a whirlpool bathroom, as well as a wrap-around balcony accessible from 3 of the bedrooms. With a view of the canopy - in the treetops - all you have to do is open the windows to find yourself out of time. The park and grounds are sure to delight, with an incredible effect right from the entrance gate. Always well maintained and home to many different species of trees, this garden is the centerpiece of the property. A pool area with pool house, at the foot of the house, completely sheltered from outside view, invites you to relax. Several chalets, each with electricity and water, spread across the grounds, offer additional space. A janitor's cottage with kitchen, living room, ensuite bedroom with dressing room and bathroom completes the ensemble. To complete the picture of this already wonderful property: a garage space, at least 8 parking spaces, ducted reversible air-conditioning in all bedrooms, automatic watering and the streetcar just a 2-minute walk away. Take advantage of an exceptional location less than 15 minutes by bike from the famous Place de la Comédie, while remaining in an environment that won't give you the impression of being in the city. A rare property, more photos and complete file on request. Secondary house ECD:

